

Valley CS

Valley CS is a distinctive and highly efficient absorber that plays with geometric patterns to create abstract shapes. Different elements can be connected in a variety of geometric patterns to generate unpredictable and (a)symmetric designs using a discreet modular installation system. This modular system uses four different wooden cores: an Absorber, Diffuser, Bass Trap, and Speaker options. Each provides distinct functionality while keeping the same design. The acoustic covers can be easily swapped or replaced.

Absorbers remove energy from incoming sound waves, reducing reflections and overall reverberation time. Diffusers scatter energy over a wide area, creating more homogenous sound fields. Bass Traps reduce low frequency room modes, diminishing the effect of standing waves. Speaker cores seamlessly integrate in-wall speakers. Discover our Cinema Series, a flexible range that can be adapted to a wide variety of environments and is tailored into beautiful, timeless, multifunctional designs.

Features

Valley CS + Absorber Core

Absorption Range: 200 Hz to 8000 Hz

Acoustic Class: B | (aw) = 0,8

Valley CS + Bass Trap Core

Absorption Range: 100 Hz to 125 Hz

Valley CS + Diffuser Core

Scattering Range: 1000 Hz to 8000 Hz

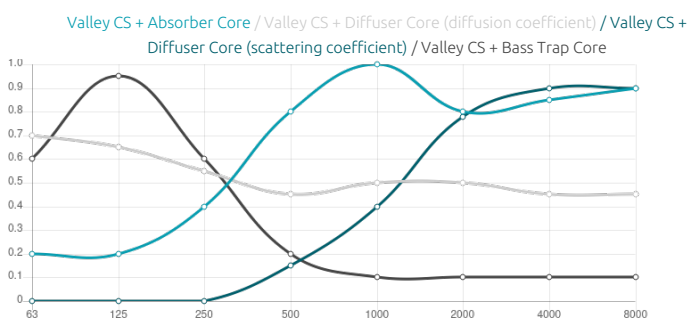
Purpose

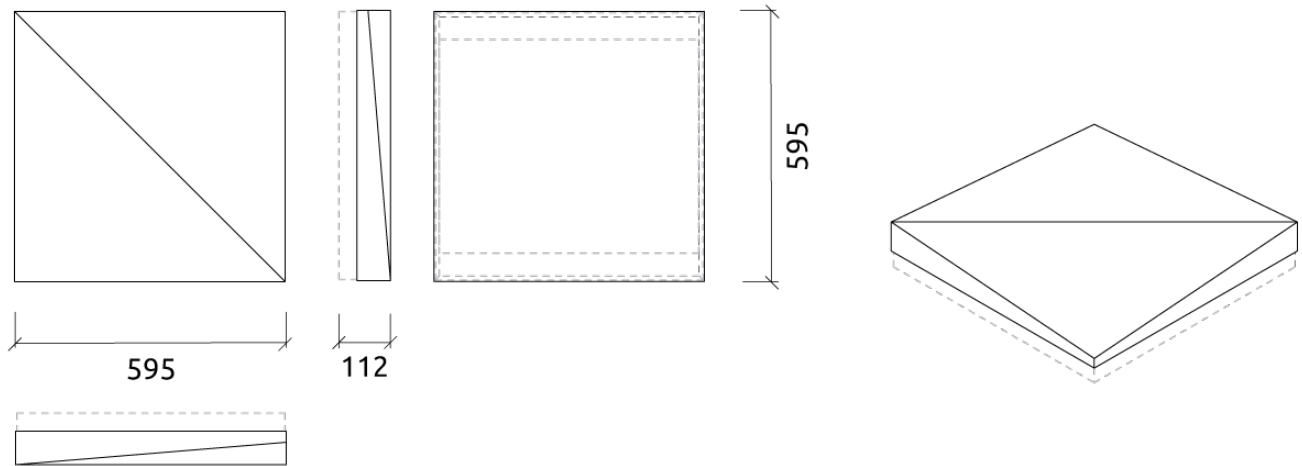
- First reflection Control
- RT reduction
- Extended mid-low frequency absorption
- Flutter echo control
- Reducing excessive reverberation
- Improving speech intelligibility

Recommended for

- Home Cinemas
- Media Rooms

Performance





Add-ons



FixArt Tube



FixArt Clip

Dimensions

FG - SF | 595x595x72mm

FG - WF | 595x595x72mm

Weight

1.3 Kg

1.3 Kg

Box

Quantity per box: 4

Dimensions: 645x310x655mm

Volume: 0.131m³

Weight: 6.72Kg

Valley CS

(FG - SF) Suede Fabric Finishes



FG | (T0272) Snow White

Retail code:
101022550012721



FG | (T0273) Light Ivory

Retail code:
101022550012731



FG | (T0274) Vanilla Beige

Retail code:
101022550012741



FG | (T0275) Earth Brown

Retail code:
101022550012751



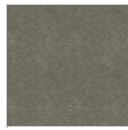
FG | (T0276) Grey Beige

Retail code:
101022550012761



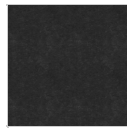
FG | (T0277) Mink Grey

Retail code:
101022550012771



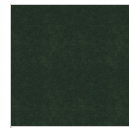
FG | (T0278) Ash Grey

Retail code:
101022550012781



FG | (T0279) Anthracite Grey

Retail code:
101022550012791



FG | (T0280) Bottle Green

Retail code:
101022550012801



FG | (T0281) Wine Red

Retail code:
101022550012811



FG | (T0282) Violet Blue

Retail code:
101022550012821



FG | (T0283) Ink Black

Retail code:
101022550012831

(FG - WF) Weave Fabric Finishes



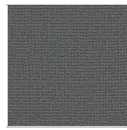
FG | (TC240) Black

Retail code:
102022550012401



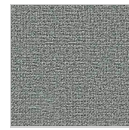
FG | (TC241) Lerwick

Retail code:
102022550012411



FG | (TC242) Merrick

Retail code:
102022550012421



FG | (TC243) Lead

Retail code:
102022550012431



FG | (TC244) Chaucer

Retail code:
102022550012441



FG | (TC245) Glass

Retail code:
102022550012451



FG | (TC246) Easdale

Retail code:
102022550012461



FG | (TC247) Walten

Retail code:
102022550012471



FG | (TC248) Vit

Retail code:
102022550012481



FG | (TC249) Austen

Retail code:
102022550012491



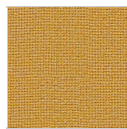
FG | (TC250) Beltane

Retail code:
102022550012501



FG | (TC251) Shetland

Retail code:
102022550012511



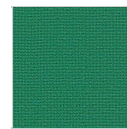
FG | (TC252) Maree

Retail code:
102022550012521



FG | (TC253) Fair Isle

Retail code:
102022550012531



FG | (TC254) Carron

Retail code:
102022550012541



FG | (TC255) Lossie

Retail code:

102022550012551



FG | (TC256) Tummel

Retail code:

102022550012561



FG | (TC257) Pitlochry

Retail code:

102022550012571